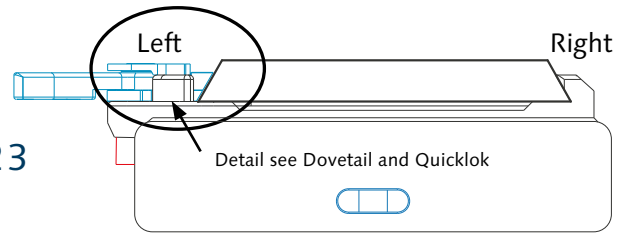


# TOPSTAGE/Wave/Trilok

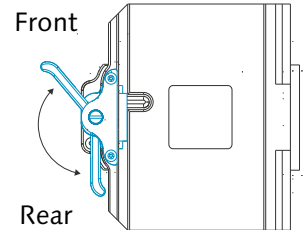


Manuale Maintenance and Care 10/2023  
Please read carefully before start to operate.

No Warranty claims if any of these points will be neglected!

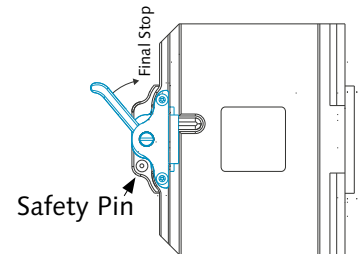
## Mounting Camera

Make sure that the Quicklok clamp is open, lever faces to the Rear.  
Attach dovetail plate with mounted camera, slide in right click down left.  
The clamp lever snaps to the front, the camera is now protected against falling out.  
Rough fore/aft balance can now be done. Fix the camera by pressing the clamping lever to Front. The clamping should fix the camera in lever position as shown on the picture.  
**NEVER EVER TRY TO PRESS THE LEVER TO THE FINAL STOP!**  
Never close or open the quicklock mechanism by force without the dovetailplate.



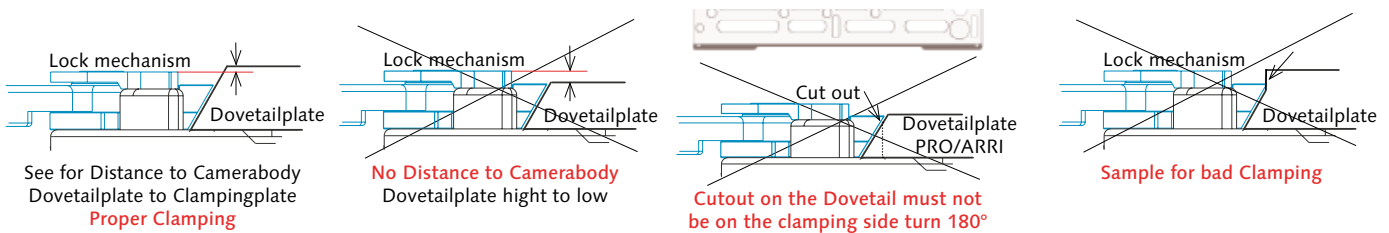
## Removing Camera

Dovetail clamp open by pulling the clamp lever fully to stage Rear.  
In order to do this, you will have to pull down the Red Safety Pin (only on Topstage),  
slide the camera out vice versa as you mounted.



## Dovetail and Quicklok

There are many dovetails from different manufacturers out there which seems that they fit into the quicklock.  
But be aware:  
Check for proper clamping on the slope surface of the dovetail and also the clamping mechanism.  
The camerabody which is mounted on the dovetail and is protruding beyond the plate should never contact the quicklock clamping plate and the mechanism. **Dovetailplate should have a minimum height of 9mm/0.36"**  
Unproper fit of the dovetail will damage or destroy the clamping mechanism which causes a change of the complete quicklockplate. The **cutout on PRO and other Plates** must be placed on the opposite side of the clamping otherwise, the automatic closure of the mechanism cannot be triggered correct or the clamping of the plate is not tight enough.



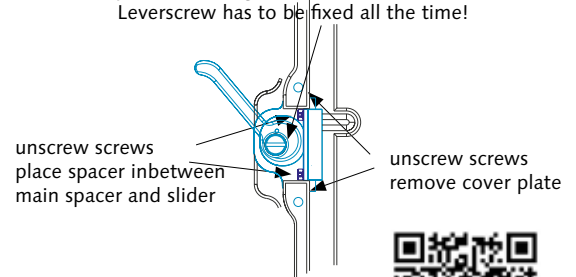
## Fore/Aft Topstage

The backlash/play in the fore/aft knob is caused by the 90° conversion gear but it does not generate a play in the fore/aft sled.  
The dovetailplate is 100% fixed in its adjusted position.

**Never Ever try to open the Lever-screw**  
you will damage the mechanism!  
Lever-screw has to be fixed all the time!

## Maintenance

In case the camera can still be moved even though the lever is pressed until final stop.  
Different tolerances of the dovetailplates or high loaded mechanism can cause the problem.  
A spacer of approx. 0,1 mm (0.004") has to be put underneath the compensation track under the cover plate.



The locking mechanism should be treated/cleaned occasionally with a resinless oil (e.g. gun oil).

